

Introduction

1) Describe the institutional environment, which includes the following:

a) *year institution was established and its type (e.g., private, public, land-grant, etc.)*

[The George Washington University](#), an independent private academic institution chartered by an act of Congress of the United States in 1821, dedicates itself to furthering human well-being. The University values a dynamic, student-focused community stimulated by cultural and intellectual diversity and built upon a foundation of integrity, creativity and openness to the exploration of new ideas.

b) *number of schools and colleges at the institution and the number of degrees offered by the institution at each level (bachelor’s, master’s, doctoral and professional preparation degrees)*

The George Washington University comprises three main campuses: Foggy Bottom and Mount Vernon in Washington, DC, and the GW Virginia Science and Technology Campus in Ashburn, VA. GW has various [medical](#), [academic](#) and [research](#) centers scattered throughout the greater DC metro area including Alexandria and Arlington, VA. GW offers approximately 140 undergraduate programs and 330 graduate programs through its [10 colleges and schools](#).

School	Description	Degrees
Columbian College of Arts and Sciences	Formed in 1821, Columbian College of Arts and Sciences (CCAS) is GW’s largest and most comprehensive academic unit. It’s home to 42 academic departments, three affiliated schools, 8,000 undergraduate and graduate students, 20 research centers and more than 500 full-time faculty—including Fulbright and Guggenheim scholars, award-winning artists, cutting-edge scientists and critically acclaimed authors.	Certificate–17 Undergraduate–67 majors Graduate–48 master’s; 24 doctoral Joint–35
School of Business	The School of Business (GW Business) was founded in 1928 on the premise that business and government might become partners in promoting national prosperity and international development. Initially known as the School of Government, with degree programs that integrated business and politics at national and international levels, the School of Business has a history of professional development of individuals assuming leadership roles in society. The school has eight departments.	Certificate–20 Undergraduate–8 majors Graduate–13 specialized master’s; 6 MBA formats; 1 doctoral Joint–16

School	Description	Degrees
<u>Graduate School of Education and Human Development</u>	Since 1904, GW has offered coursework in the field of education. With fewer than a dozen faculty at first, the education division became the Teachers' College in 1909 and then eventually the School of Education in 1928, with departments of education, educational psychology and home economics. In 1994, the school became Graduate School of Education and Human Development (GSEHD) when it transitioned to a more focused mission on graduate education. Today, GSEHD's programs are organized within five departments, which house master's, education specialist, doctoral and graduate certificate programs.	Certificate–20 Undergraduate–0 majors Graduate–24 master's; 12 doctoral Joint–16
<u>School of Engineering and Applied Science</u>	The School of Engineering and Applied Science (SEAS) was organized in 1884 as the Corcoran Scientific School of Columbian University, named in honor of William W. Corcoran, president of the University's Board of Trustees from 1869 to 1888. While the organization and offerings of the school have evolved over the years, throughout most of its history its programs have been characterized by an emphasis on principles guiding the advancement of technology.	Certificate–20 Undergraduate–17 majors Graduate–18 master's; 12 doctoral Joint–23
<u>Elliott School of International Affairs</u>	The historical roots of the Elliott School extend back to the establishment of the School of Comparative Jurisprudence and Diplomacy in 1898. In 1966, the school separated from the School of Government, Business and International Affairs to become an independent unit, the School of Public and International Affairs. In 1987, the name was changed to the School of International Affairs, and in 1988 the school was renamed in honor of Evelyn E. and Lloyd H. Elliott. Lloyd Elliott served as president of George Washington University from 1965 to 1988.	Certificate–3 Undergraduate–5 majors Graduate–15 master's; 0 doctoral Joint–4
<u>School of Medicine and Health Sciences</u>	Founded in 1824, the School of Medicine and Health Sciences (SMHS) was the first medical school in the nation's capital and is the eleventh oldest in the country. Working together in our nation's capital with integrity and resolve, SMHS is committed to improving the health and well-being of our local, national and global communities.	Certificate–20 Undergraduate–9 majors Graduate–14 master's; 7 doctoral Joint–12

School	Description	Degrees
<u>School of Nursing</u>	Established in 2010, the School of Nursing (GW Nursing) has a proven record of innovation, entrepreneurship and leadership. GW Nursing educates and inspires nurses to provide high-quality, compassionate, person-centered health care. It develops leaders who actively engage in health promotion, patient advocacy and health care innovation and prepares nurse educators to pursue quality and advance the profession.	Certificate–6 Undergraduate–1 major Graduate–6 master’s; 8 doctoral Joint–1
<u>College of Professional Studies</u>	Founded in 2000, the College of Professional Studies (CPS) offers an expanding range of degree programs leading to bachelor’s and master’s degrees in professional studies, along with a variety of certificate programs.	Certificate–13 Undergraduate–4 majors Graduate–10 master’s; 0 doctoral Joint–8
<u>Law School</u>	Since enrolling its first class in 1865, GW Law School has produced some of the finest minds across the spectrum of legal scholarship. That tradition continues today, as GW Law graduates use the knowledge and skills they gain here to influence the critical legal conversations of our times.	Certificate–0 Undergraduate–0 majors Graduate–2 master’s; 2 doctoral Joint–10
<u>Milken Institute School of Public Health</u>	The only school of public health in Washington, DC, the Milken Institute School of Public Health (GWSPH) spearheads initiatives and programs that fight obesity, improve community health policy, and assess the quality of care provided nationally and around the world. GWSPH faculty, researchers and students maximize their long-standing relationships with the world’s most influential health organizations to advance learning and research for the benefit of all. Together, they have developed groundbreaking models for national and international health care reform.	Certificate–3 Undergraduate–4 majors Graduate–26 master’s; 9 doctoral ³ Joint–13

c) *number of university faculty, staff and students*

As the largest institution of higher education in Washington, DC, GW has over 26,000 undergraduate and graduate students, hailing from all 50 US states, DC and over 130 countries. The university employs over 3,700 faculty and staff (instructional and noninstructional). The student-to-faculty ratio is 12:1.

³ The two concentrations in the PhD and MS programs in Health Data Science are counted separately.

d) *brief statement of distinguishing university facts and characteristics*

The formation of GW was the culmination of George Washington's vision for a national university in the nation's capital with funding from benefactors including John Quincy Adams, John C. Calhoun and James Monroe. The university was established by an act of Congress and approved by President Monroe, first as Columbian College and then as Columbian University, making it one of only five universities created by congressional charter. The university was renamed George Washington University in 1904 and moved to the Foggy Bottom neighborhood in 1914.

GW has a rich history of attracting prominent politicians, activists, celebrities and other renowned individuals. GW counts among its alums 16 foreign heads of state or government, 28 US senators, 27 US governors, 18 US Cabinet members, five Nobel laureates, two Olympic medalists, two Academy Award winners and one Golden Globe winner. Former Board of Trustees members include Ulysses S. Grant, Alexander Bell and John Quincy Adams. Grant's grandson, Ulysses S. Grant III, was Vice President of the university from 1946 to 1951. The George Washington University Hospital successfully treated President Reagan after his attempted assassination in 1981, and the Emergency Department now bears his name. In 1999, GW made history as it webcast the first Presidential Town Hall featuring President Clinton. Notable faculty members have included George Gamow (scientist best known for his work on the *Big Bang Theory*), Al Gore (former US Vice President), Ketanji Brown Jackson (Supreme Court Justice), Masatoshi Koshihira (Nobel Prize winner), Edward P. Jones (Pulitzer Prize winner) and Clarence Thomas (Supreme Court Justice).

Over the last decade, GW has received many accolades and rankings, including:

- Top Universities for Producing Billionaires by *Times Higher Education's World University Rankings*
- Top Research Universities by *Forbes*
- Most Politically Active by *The Princeton Review*
- Best College Newspaper by *The Princeton Review*
- Most Popular Study Abroad Program by *The Princeton Review*
- Great College Towns by *The Princeton Review*
- Best in the Northeast by *The Princeton Review*
- Top Colleges or Universities for Internship Opportunities by *The Princeton Review*
- Best Global Universities for Social Sciences and Public Health by *U.S. News and World Report*
- American Association of Universities

e) *names of all accrediting bodies (other than CEPH) to which the institution responds. The list must include the institutional accreditor for the university as well as all specialized accreditors to which any school, college or other organizational unit at the university responds*

The George Washington University is [accredited](#) by its institutional accrediting agency, the Middle States Commission on Higher Education. College-level accreditation is detailed in the table below.

College/School	Accreditation
Columbian College of Arts and Sciences	<ul style="list-style-type: none"> • Bachelor and MFA in interior architecture–Council for Interior Design Accreditation • Department of Chemistry–American Chemical Society • PhD in clinical psychology and the PsyD in clinical psychology–American Psychological Association • MA in speech-language pathology –Education and Training Board of the Boards of Examiners in Speech-Language Pathology and Audiology. • MPA and MPP–National Association of Schools of Public Affairs and Administration • MFS in forensic chemistry and MFS in forensic molecular biology–Forensic Science Education Programs Accreditation Commission • Art therapy program–Commission on Accreditation of Allied Health Education Programs • Corcoran School of the Arts and Design–National Association of Schools of Art and Design
School of Medicine and Health Sciences	<ul style="list-style-type: none"> • School–Liaison Committee on Medical Education • BS in health sciences in the field of medical laboratory sciences, all post-baccalaureate certificates in medical laboratory sciences and MS in health sciences in laboratory medicine–National Accrediting Agency for Clinical Laboratory Science • MS in health sciences in physician assistant–Accreditation Review Commission on Education for the Physician Assistant • DPT–Commission on the Accreditation of Physical Therapist Education of the American Physical Therapy Association • DOT–Accreditation Council of Occupational Therapy Education (candidacy status) • MS in health science in the field of health care quality–Commission on the Accreditation of Health care Management Education
Law School	<ul style="list-style-type: none"> • School–Association of American Law Schools (charter member) and Section of Legal Education and Admissions to the Bar of the American Bar Association
School of Engineering and Applied Science	<ul style="list-style-type: none"> • BS in civil, mechanical, biomedical, systems, electrical and computer engineering–Engineering Accreditation Commission of ABET, Inc. • BS in computer science–Computing Accreditation Commission of ABET, Inc.
Graduate School of Education and Human Development	<ul style="list-style-type: none"> • School–American Association of Colleges for Teacher Education (charter member); Council for the Accreditation of Educator Preparation as a National Council for the Accreditation of Teacher Education legacy program; District of Columbia State Education Agency, Office of the State Superintendent of Education • MS in school counseling, clinical mental health counseling and rehabilitation counseling–Council for Accreditation of Counseling and Related Educational Programs • PhD in counseling–Council for Accreditation of Counseling and Related Educational Programs

College/School	Accreditation
School of Business	<ul style="list-style-type: none"> • School–The Association to Advance Collegiate Schools of Business (AACSB International) member • Undergraduate and graduate business administration and accountancy–AACSB • Programs in accountancy satisfy the educational requirements for the certified public accountant and the certified management accountant professional examinations
Elliott School of International Affairs	<ul style="list-style-type: none"> • School–Association of Professional Schools of International Affairs (member)
Milken Institute School of Public Health	<ul style="list-style-type: none"> • School–Council on Education for Public Health; Association of Schools and Programs of Public Health (member); Association of University Programs of Health Administration (member) • MHA–Commission on Accreditation of Health care Management Education
College of Professional Studies	<ul style="list-style-type: none"> • MPS in sustainable urban planning–Planning Accreditation Board
School of Nursing	<ul style="list-style-type: none"> • BSN–Commission on Collegiate Nursing Education; Virginia Board of Nursing • MSN, DNP, post-master's APN–Commission on Collegiate Nursing Education; District of Columbia Board of Nursing

- f) *brief history and evolution of the school of public health (SPH) and related organizational elements, if applicable (e.g., date founded, educational focus, other degrees offered, rationale for offering public health education in unit, etc.).*

The [Milken Institute School of Public Health \(GWSPH\)](#) was formally established on July 1, 1997, as the first school of public health in Washington, DC. It remains the only public health school in the nation’s capital, located on the Foggy Bottom campus of the George Washington University. When GWSPH opened its doors, it brought together a number of academic programs from across the university. For instance, the signature MPH degree was originally offered in the School of Medicine and Health Sciences. The founding of GWSPH was an opportunity to integrate these disparate public health programs and build a powerhouse school that would educate future public health leaders and practitioners. Now, the vigor and enthusiasm that created the vision for the school has been rekindled as the institution solidifies its place as a world-renowned hub for science, learning, research, community engagement and applied practice.

GWSPH has seven academic departments,⁴ most of which are based at 950 New Hampshire Avenue, Washington, DC, a 115,000 square foot award-winning LEED Platinum certified building. Our home provides a central location for faculty, students, alums and staff to make face-to-face connections and convene with prominent leaders to exchange ideas. The building is also a focal point for hosting public health events as we continue the tradition of hosting dynamic and engaging speakers in the field of public health. GWSPH offers diverse programming from a wide range of degree programs. The school offers undergraduate, master's and doctoral degrees. GWSPH has 20 distinct residential and online MPH programs,

⁴ Biostatistics and Bioinformatics (DBB), Prevention and Community Health (PCH), Environmental and Occupational Health (EOH), Epidemiology (Epi), Exercise and Nutrition Science (EXNS), Global Health (GH), Health Policy and Management (HPM).

meeting the needs of students. The school also offers 14 undergraduate programs, plus four minors, four combined bachelor's/master's programs, four MS programs, one DrPH program and eight PhD programs. In addition, GWSPH has both an online and a residential Master of Health Administration (MHA) degree as well as joint degrees with medicine (SMHS), law (GW Law), nursing (GW Nursing) and the physician assistant program in SMHS.

As the only school of public health in DC, we have been able to recruit a world-class faculty—335 strong—who have not only studied public health but also led and transformed public health. Our students have access to many only-in-DC opportunities, such as internships at the White House, on Capitol Hill, or with the Department of Health and Human Services, Environmental Protection Agency, World Bank, Pan American Health Organization, American Public Health Association, and other national or global health organizations, unmatched by any other schools of public health in the world. Our faculty and students are tackling public health's biggest problems domestically and globally through our groundbreaking research, whether by studying vectors and microbiomes to prevent infectious outbreaks and antimicrobial resistance in our state-of-the-science laboratories and genomic core, by working with government and community partners to end the HIV epidemic in DC, or by using big data and environmental surveillance to study the impact of climate change. GWSPH is changing the world through the research we do, the students we educate, and the practice and policies we transform.

Over the last decade, GWSPH has experienced tremendous growth in all its residential and online programs. Since 2015–2016, GWSPH has experienced an approximate 14% growth in primary faculty, 67% growth in staff FTE and 34% growth in enrolled students. The MPH@GW program, which has seen the greatest growth rate, marked its 10th anniversary this past summer. Today, the MPH@GW is the single largest program, graduating approximately 400 students each academic year.

Energized by a commitment to excellence and a vision for transformative impact, GWSPH is surging forward with an expansive array of initiatives designed to elevate the field of public health. Building upon the solid foundation of our existing residential and online programs, we proudly introduce groundbreaking MPH@GW concentrations, offering a specialized focus on key disciplines within the dynamic realm of public health. This strategic move signifies our unwavering dedication to equipping future leaders with the precise expertise needed to tackle complex health challenges with precision and insight.

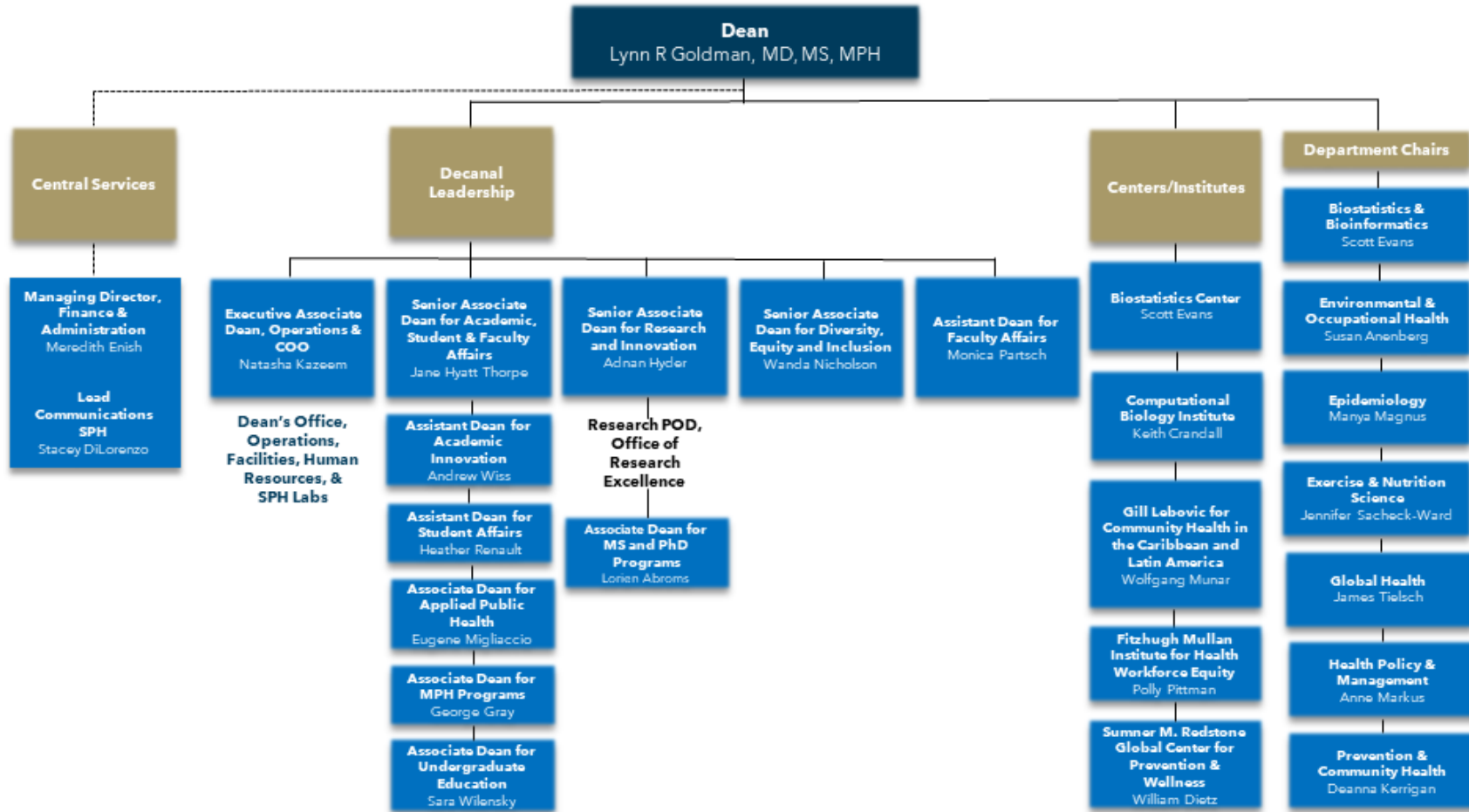
Moreover, in a bold step toward fostering exceptional leadership and groundbreaking research, we restructured our doctoral programs, strategically emphasizing the pivotal aspects of public health leadership training and research-driven excellence. A crowning achievement of this endeavor is the introduction of the pioneering DrPH program, a testament to our unwavering commitment to producing visionary public health leaders equipped with the necessary skills to architect, implement and assess impactful public health initiatives and policies. This program, available both in residential and online formats, harnesses the collective brilliance of our faculty and interdisciplinary experts, harmonizing the nexus of leadership and teaching excellence across diverse disciplines.

Simultaneously, GWSPH unveiled a constellation of signature discipline-specific PhD programs, deeply rooted in the cutting-edge research prowess of our esteemed faculty and aligned with the university's vision of global prominence. We are committed to fostering increased collaboration within our school and across the university, expanding George Washington University's influence in global health and development, particularly in low- and middle-income countries.

These distinctive programs are meticulously crafted to nurture a generation of scholars and researchers adept at unearthing groundbreaking solutions to pressing public health dilemmas on a national and global scale. Reflecting our unwavering commitment to advancing the frontiers of knowledge, our academic programs stand as beacons of innovation, poised to carve a path toward a healthier and safer future for communities worldwide, powered by public health.

2) Organizational charts that clearly depict the following related to the school:

a) the school's internal organization, including the reporting lines to the dean

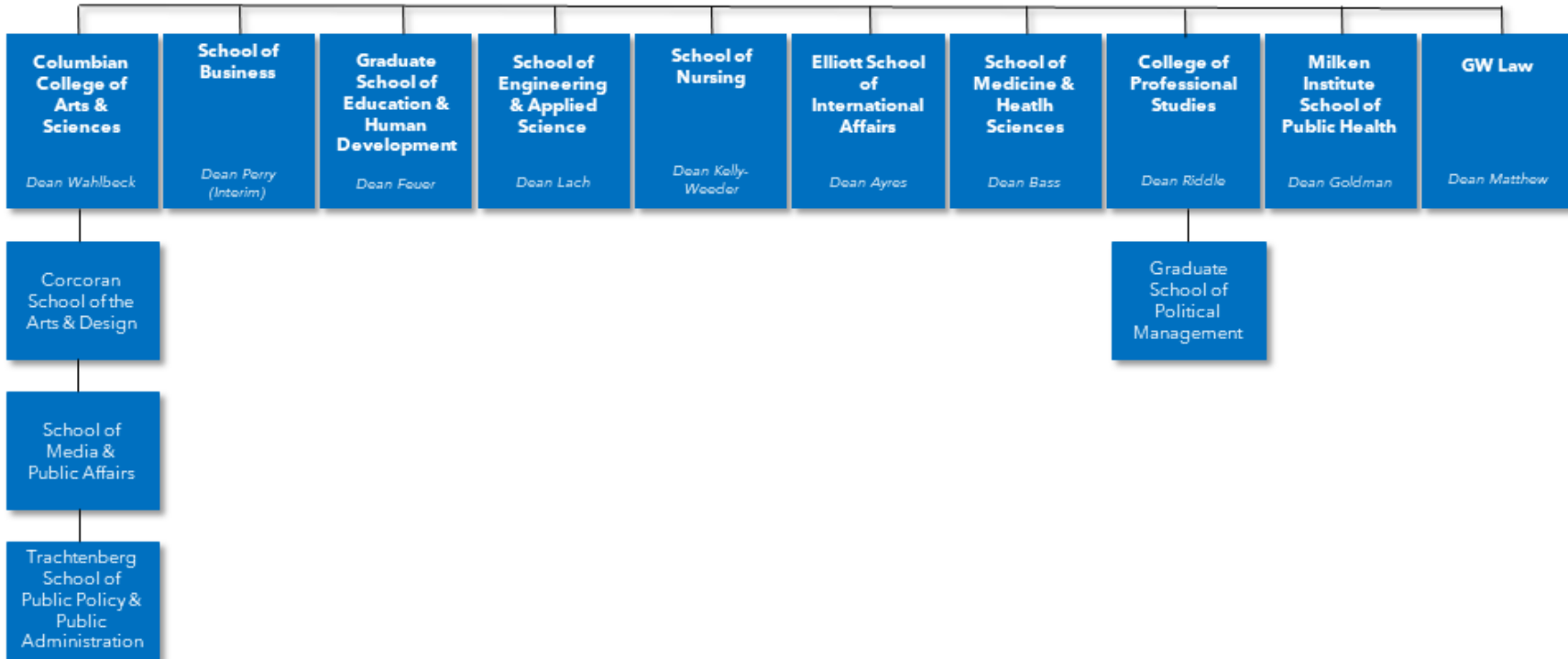


See ERF > Introduction > Organizational Charts.

b) the relationship between school and other academic units within the institution. Organizational charts may include committee structure organization and reporting lines

THE GEORGE WASHINGTON UNIVERSITY

WASHINGTON, DC



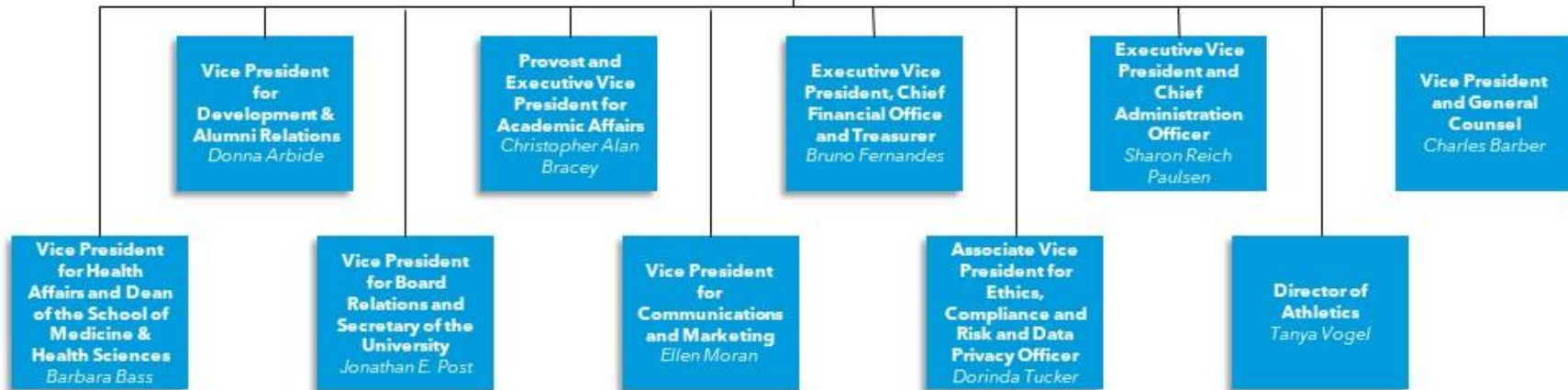
See ERF > Introduction > Organizational Charts.

- c) *the lines of authority from the school's leader to the institution's chief executive officer (president, chancellor, etc.), including intermediate levels (e.g., reporting to the president through the provost)*

THE GEORGE WASHINGTON UNIVERSITY

WASHINGTON, DC

GW President
Ellen Granberg

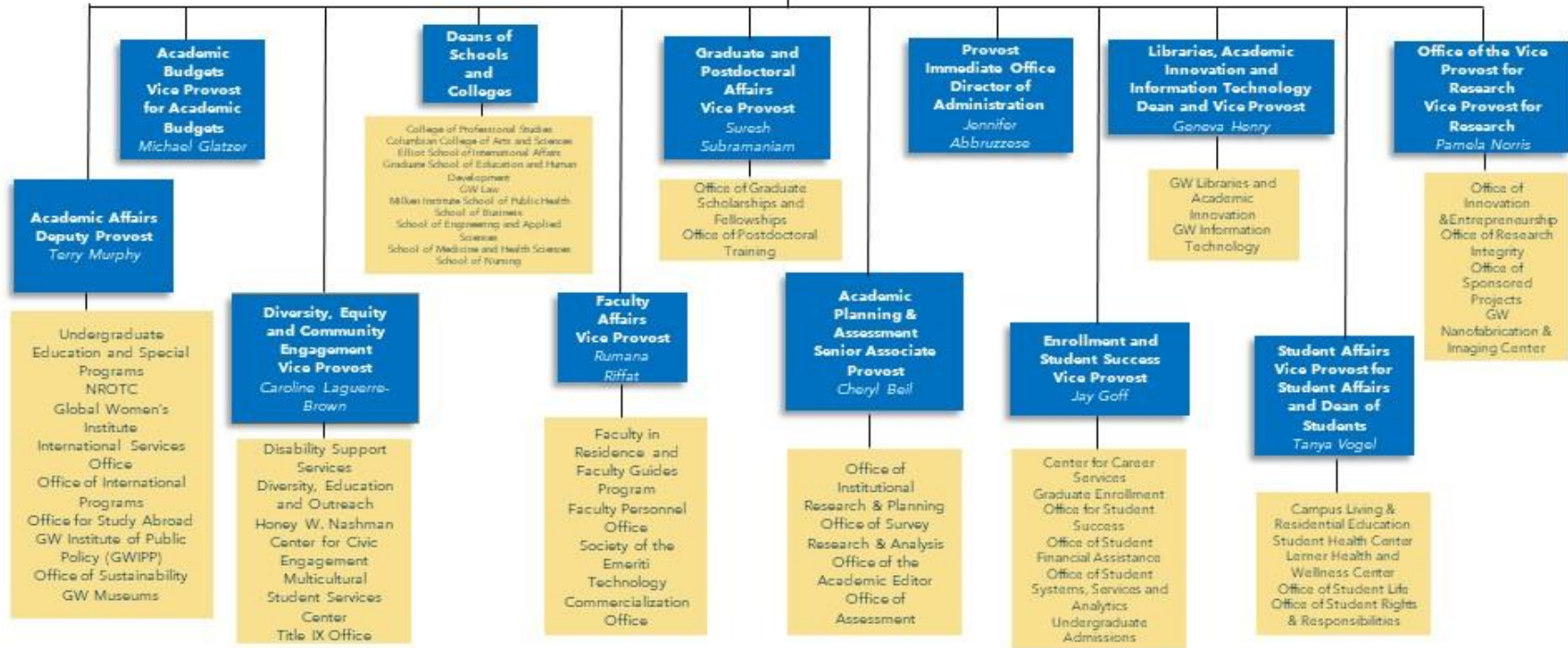


THE GEORGE WASHINGTON UNIVERSITY

WASHINGTON, DC

Provost and Executive Vice President for Academic Affairs

Christopher Alan Bracey



See ERF > Introduction > Organizational Charts.

d) for multi-partner schools and schools (as defined in Criterion A2), organizational charts must depict all participating institutions

Not applicable

3) An instructional matrix presenting all of the school's degree schools and concentrations including bachelor's, master's and doctoral degrees, as appropriate. Present data in the format of Template Intro-1.

Template Intro-1

Instructional Matrix–Degrees and Concentrations				
		Categorized as public health	Campus based	Distance based
Bachelor's Degrees⁵				
<i>Majors, Concentration</i>	<i>Degree</i>			
Public Health, No Concentration	BS	X	X	
Public Health, Pre-Medical Concentration	BS	X	X	
Public Health, Pre-Health Concentration	BS	X	X	
Exercise Science, No Concentration	BS		X	
Exercise Science, Pre-Medical Professional	BS		X	
Exercise Science, Pre-Physical Therapy	BS		X	
Exercise Science, Pre-Athletic Training/Sports Medicine	BS		X	
Exercise Science, Strength & Conditioning	BS		X	
Nutrition, No Concentration	BS		X	
Nutrition, Applied Nutrition	BS		X	
Nutrition, Nutrition Science	BS		X	
Nutrition, Pre-Medical Professional	BS		X	
Health Data Science, No Concentration	BS		X	
Health Data Science, Pre-Medical Professional	BS		X	
Master's Degrees	Academic	Professional		
<i>Programs</i>	<i>Degree</i>	<i>Degree</i>		
Biostatistics		MPH	X	X

⁵ Throughout the remainder of the self-study, BS degrees are referred to solely by their major names.

George Washington University, Milken Institute School of Public Health

Community-Oriented Primary Care		MPH	X	X	
Environmental Health Science and Policy		MPH	X	X	
Epidemiology		MPH	X	X	
Global Environmental Health		MPH	X	X	
Global Health Epidemiology and Disease Control		MPH	X	X	
Global Health Program Design, Monitoring and Evaluation		MPH	X	X	
Global Health Policy		MPH	X	X	
Health Policy		MPH	X	X	
Health Promotion		MPH	X	X	
Humanitarian Health		MPH	X	X	
Maternal and Child Health		MPH	X	X	
Physical Activity in Public Health		MPH	X	X	
Public Health Communication and Marketing		MPH	X	X	
Public Health Nutrition		MPH	X	X	
MPH@GW, Public Health Generalist ⁶		MPH	X		X
MPH@GW, Global Health		MPH	X		X
MPH@GW, Health Informatics and Analytics		MPH	X		X
MPH@GW, Climate and Health		MPH	X		X
MPH@GW, Women, Youth and Child Health		MPH	X		X
Public Health Microbiology and Emerging Infectious Diseases	MS		X	X	
Health Data Science, Applied Biostatistics	MS		X	X	
Health Data Science, Applied Bioinformatics	MS		X	X	
Strength and Conditioning	MS				X
Health Administration		MHA		X	
MHA@GW		MHA			X
Doctoral Degrees	Academic	Professional			
<i>Programs</i>	<i>Degree</i>	<i>Degree</i>			
Public Health Generalist (DrPH and DrPH@GW)		DrPH	X	X	X

⁶ The MPH@GW has multiple completion timelines, originally called tracks. Based on preliminary self-study feedback, GWSPH is working to remove the term "track" to avoid confusion. Instead, they will be called "options."

George Washington University, Milken Institute School of Public Health

Environmental Health		PhD		X	X	
Epidemiology		PhD		X	X	
Exercise Physiology and Applied Nutrition		PhD			X	
Global Public Health Sciences		PhD		X	X	
Health Data Science, Applied Biostatistics		PhD		X	X	
Health Data Science, Applied Bioinformatics		PhD		X	X	
Health Policy		PhD		X	X	
Social and Behavioral Sciences in Public Health		PhD		X	X	
Joint Degrees (Dual, Combined, Concurrent, Accelerated Degrees)		Academic	Professional			
2nd Degree Area	Public Health Concentration					
<i>Degree area earned in conjunction</i>	<i>Existing or joint-specific</i>	<i>Degrees</i>	<i>Degrees</i>			
MD	MPH@GW, Public Health Generalist		MPH	X		X
PA (MS in Physician Assistant)	Community Oriented Primary Care		MPH	X	X	
PA (MS in Physician Assistant)	Environmental Health Science and Policy		MPH	X	X	
PA (MS in Physician Assistant)	Epidemiology		MPH	X	X	
PA (MS in Physician Assistant)	Global Environmental Health		MPH	X	X	
PA (MS in Physician Assistant)	Maternal and Child Health		MPH	X	X	
MSN	MPH@GW, Public Health Generalist		MPH	X		X
JD	Any residential MPH		MPH	X	X	
LLM (Master of Law)	Any residential MPH		MPH	X	X	
BS in Public Health	Any MPH (residential or online)		BS, MPH	X	X	X

BS in Nutrition Science	Any MPH (residential or online)		MPH	X	X	X
BS in Nutrition Science	MPH, Public Health Nutrition ⁷		MPH	X	X	
Any non-GWSPH BS or BA	MPH, Environmental Health Science and Policy or MPH, Global Environmental Health		MPH	X	X	

NOTE: The DrPH, Public Health Generalist was launched in fall 2021. Prior to the launch of the generalist DrPH, there were four DrPH programs in Health Policy, Environmental Health, Global Health and Health Behaviors. These programs have been deactivated and the students currently in the programs are being supported as they are taught out. These students are identified on the table below.

Additional degree programs not listed on the above table include the joint MS in International Affairs/MPH in Global Health Epidemiology and Disease Control. It has been deactivated, and the final student is expected to graduate in 2023-2024. GWSPH used to offer an MS in Health Informatics and Analytics. The program was deactivated, and the final students graduated in 2022-2023. As of fall 2023, there are no more students in the deactivated MS in Epidemiology program. Finally, GWSPH used to operate MS and PhD programs in Biostatistics jointly with CCAS. These programs are no longer accepting new students, and the fewer than five remaining students are being taught out. Leadership of these programs was transferred to a CCAS faculty member, and the program was removed from the GWSPH website.

4) Enrollment data for all of the school’s degree schools, including bachelor’s, master’s and doctoral degrees, in the format of Template Intro-2. Schools that house “other” degrees and concentrations (as defined in Criterion D18) should separate those degrees and concentrations from the public health degrees for reporting student enrollments.

Degree		Spring 2023	Fall 2023	Spring 2024
Master's				
	MPH, Biostatistics	21	29	28
	MPH, Community-Oriented Primary Care	44	49	46
	MPH, Environmental Health Science and Policy	25	31	31
	MPH, Epidemiology	101	116	111
	MPH, Global Environmental Health	26	17	18
	MPH, Global Health Epidemiology and Disease Control	66	69	62

⁷ The BS in Nutrition Science/MPH in Public Health Nutrition is separated as the number of “crossover” credits differs from other MPH degrees.

	MPH, Global Health Program Design, Monitoring and Evaluation	40	31	26
	MPH, Global Health Policy	36	37	38
	MPH, Health Policy	135	125	125
	MPH, Health Promotion	43	40	38
	MPH, Humanitarian Health	15	11	8
	MPH, Maternal and Child Health	62	78	73
	MPH, Physical Activity in Public Health	4	4	5
	MPH, Public Health Communication and Marketing	25	23	21
	MPH, Public Health Nutrition	18	16	14
	MPH@GW, Public Health Generalist	993	843	690
	MPH@GW, Global Health	12	20	22
	MPH@GW, Health Informatics and Analytics	21	24	20
	MPH@GW, Climate and Health	0	8	9
	MPH@GW, Women, Youth and Child Health	8	20	20
	MS, Public Health Microbiology and Emerging Infectious Diseases	30	23	20
	MS, Health Data Science, Biostatistics	2	2	11
	MS, Health Data Science, Bioinformatics	14	12	10
	All remaining Master's degrees (MS in Exercise Science, Strength and Conditioning; MHA, MHA@GW)	248	242	226
Doctoral				
	DrPH, Public Health Generalist	37	75	73
	<i>DrPH, Departmental (pre-2021 matriculation)</i> ⁸	38	28	19
	PhD, Environmental Health	8	9	9
	PhD, Epidemiology	20	22	17
	PhD, Global Public Health Sciences	7	12	10
	PhD, Health Data Science, Biostatistics	7	14	15
	PhD, Health Data Science, Bioinformatics	6	8	9
	PhD, Health Policy	15	16	15
	PhD, Social and Behavioral Sciences in Public Health	12	18	16
	All remaining doctoral degrees (PhD in Exercise Physiology and Applied Nutrition)	7	12	10

⁸ These DrPH programs in Health Policy, Environmental Health, Global Health and Health Behaviors are currently deactivated and no longer accepting new students. These continuing students are expected to graduate by 2027, though most will likely graduate in the next two years.

Bachelor's				
	BS, Public Health	428	390	378
	All remaining bachelor's degrees (BS, Exercise Science; BS Nutrition)	140	149	161