

Research Brief

Message from the Senior Associate Dean for Research

Dear Colleagues,

The release on 28 Feb 2023 by the 120 Initiative of a set of recommendations to help focus efforts to reduce gun violence in the United States is one step in the right direction. This country needs to stop gun violence. The 120 Initiative was named for the average amount of gun violence deaths that occur daily in the U.S. The 120 Initiative was launched by *The Consortium of Universities of the Washington Metropolitan Area* - including George Washington University. More than 100 researchers, policymakers, and activists, over the span of seven months, gathered to discuss research-informed ideas with the goal of creating a list of action items. Among the ideas discussed by experts, the most prominent were engaging the community in violence prevention, creating anti-gun violence education campaigns, and expanding the use of safety devices and safety training.

As gun violence has taken countless lives, this initiative could not have come at a more dire time; and I am thankful to those GWSPH faculty who engaged in this initiative and continue to work on this issue. By making gun violence prevention a community effort, we can imagine a safer country.

Read more here: <https://consortium.org/washington-dc-area-universities-release-recommendations-to-reduce-gun-violence-in-the-united-states/>

With thanks,

AH

Adnan Hyder, MD MPH PhD
*Senior Associate Dean for Research
Professor of Global Health
Milken Institute School of Public Health*



Funding Opportunities



RFA for Investigator Sponsored Studies in Serious Mental Illness: Bipolar I Disorder & Schizophrenia

RFP Concept Submission Deadline:

April 15th, 2023 11:59 ET

The ISS (Investigator Sponsored Studies) program accepts submissions from applicants with varied education and training backgrounds including MDs, PhDs, PAs, PharmDs, NPs and RNs. Types of research considered for submission include **interventional, observational, monitoring/surveillance, use of registry data, historical chart review, secondary research or meta-analysis, and patient reported outcomes**. Currently, ISS areas of interest include the use of *Olanzapine and samidorphan (OLZ/SAM)* to treat schizophrenia and bipolar I disorder, as well as the use of *Aripiprazole lauroxil (AL)*. For more details about requirements and important dates, read [here](#).



Cancer Center

GWCC ACS-IRG Funding Opportunity for Cancer Researchers

Deadline: March 15, 2023

The GW Cancer Center (GWCC), with an Institutional Research Grant from The American Cancer Society, will be awarding pilot grants to early-career investigators who do not have national peer-reviewed research grant support. The purpose of this block award is to support **junior faculty/assistant professors** in initiating cancer research projects so they can obtain preliminary results that will enable them to be competitive for national research grants. For the full announcement, click [here](#). For any questions, please contact Pesha Rubinstein at Pesha.Rubinstein@gwu.edu.

[Apply Here](#)



Landscaping Regional Research and Leadership Capacities for the Study of Human Flourishing

Full Proposal Deadline: April 14th, 2023

As a part of their Grand Challenges for Human Flourishing Request for Ideas (RFI), The Templeton World Charity Foundation created Exploring our Common Humanity in Diverse Contexts (ECoH), a combination of submissions for this RFI that converged on the need to expand our understanding of human flourishing in diverse populations. As part of the ECoH initiative, the Foundation will be exploring the feasibility of establishing up to three regional Collaborative Research Hubs that will aid researchers in developing and implementing research agendas to advance scientific research on topics and outcomes central to human flourishing.

A total of three awards of up to **US \$260,000 each** will be offered. Each award is expected to fund a Landscaping Review of one or more of the following regions: **Latin America, the Caribbean, Africa, the Middle East, South Asia, South-East Asia and East Asia.**

For the full announcement, click [here](#).

[Apply Here](#)

[March Deadlines](#)

[Continuous Deadlines](#)

Lectures & Events



Registration is Open!

Where: New Orleans, LA

When: March 27-29, 2023

The Association for Prevention Teaching and Research will be holding its Leadership for Health Equity in March 2023. Attendees will have the opportunity to connect with a diverse group of health professionals to focus on the

knowledge, skills, collaborations, and resources needed to teach, practice and promote population health.

*Registration closes 03/23/2023



GW Libraries and Academic Innovation is offering a range of workshops and resources to faculty throughout March 2023

Apply to the Course Design Institute

May 22nd-26th, 2023

Applications Due: March 29th, 2023

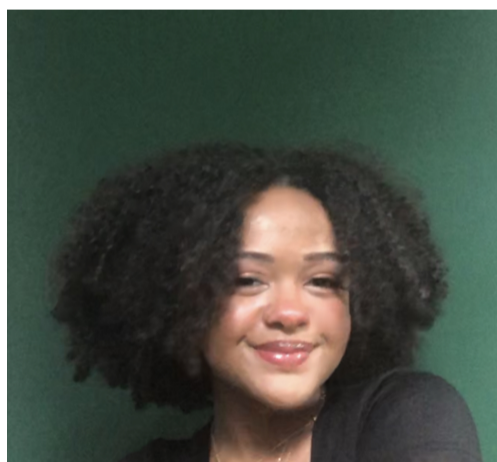
The Course Design Institute (CDI) is a **virtual** “bootcamp” style program that guides faculty through the design of a new course or the redesign of an existing one in a facilitated, supported environment. Participants experience the **iterative, dynamic, and scholarly process of learning-focused course design and the benefits of active learning**. CDI is co-taught with a team of experienced faculty facilitators.

All GW faculty members are invited to apply to this annual program. The time commitment is an intensive **4.5 days**, and **\$500 stipends** are awarded upon successful completion. Opportunities to collaborate with fellow faculty are an integral part of the experience. CDI has proven relevant to any teaching mode. We will discuss both in-person and online courses.

For more information and requirements, click [here](#).

[More Spring 2023 Libraries and Academic Innovation Workshops](#)

Pod Spotlight



Meet our ORE Team Member of the Week:

Dayna de Montagnac

Dayna joined the Office of Research Excellence in October 2022 as a Program Assistant Coordinator. She received her bachelor's degree in public health at American University before pursuing her MPH in environmental health science and policy at GWSPH. Since starting her master's program, she has started an internship at the EPA, joined the NACCHO student chapter, and earned the HRSA Public Health Scholarship. Dayna enjoys publishing the ORE's biweekly newsletter, and seeing new and interesting research projects underway by staff and students.

We are proud to have her as part of our team!

Research Resources

ORCiD

Connecting Research
and Researchers

Connect Your ORCiD to GW

ORCiD (Open Researcher & Contributor Identifier) is an open, non-profit effort to create and maintain a registry of unique researcher identifiers and a transparent method of linking research activities and outputs to these identifiers. ORCiD IDs distinguish individuals with common names and are not affected by name changes, cultural differences in name order, inconsistent abbreviations, or the use of different alphabets. An ORCiD ID is increasingly required or requested by funders and publishers.

Learn more [here](#).

 OFFICE OF
SPONSORED PROJECTS

MyResearch Training and Documentation: The Office of Sponsored Projects is offering live training sessions and open doors to introduce myResearch. These sessions are relevant for principal investigators, research administrators, proposal reviewers, and Cayuse 424 users. To see recordings of past sessions and register for others, visit <https://sponsoredprojects.gwu.edu/myresearch-training>.

Subscribe here for more updates!

If you'd like content featured in our bi-weekly newsletter, please send emails to us at GWSPHResearch@gwu.edu.

*Copyright © 2022
The George Washington University
Milken Institute School of Public Health
Office of Research Excellence
All rights reserved.*

Want to change how you receive these emails?
You can update your preferences or unsubscribe from this list.