

Message from the Senior Associate Dean for Research

Dear Colleagues,

I am delighted to welcome our students and many of you back after what I sincerely hope was a restorative summer break. It warms my heart to see our vibrant campus come alive once more with the return of our staff, students, and faculty, all brimming with excitement for the start of this new academic year.

I look forward to providing a research update in our fall 2024 staff and faculty assemblies. I'm excited to share the innovative work at GWSPH and celebrate your remarkable achievements with you.

Together, let's embark on this new journey fueled by our shared passion for learning and making a lasting impact on our global community. I hope this academic year is filled with success, groundbreaking research, and enriching intellectual discussions. I'm honored to be part of this institution and excited to see what we will achieve ahead.

Wishing everyone a successful and fruitful semester,
AH

Adnan Hyder, MD MPH PhD
Senior Associate Dean for Research & Innovation
Professor of Global Health
Milken Institute School of Public Health



Announcements

The Fall 2024 GWSPH Research Innovation Awards: Call for Applications

The GW Milken Institute School of Public Health (GWSPH) Research Innovation Awards are designed to foster groundbreaking ideas and support promising research initiatives that have the potential to secure significant external grant funding. This prestigious program aims to encourage innovation, creativity, and bold thinking within the field of public health.

Faculty members who hold a primary appointment at GWSPH and are eligible to serve as Principal Investigators are invited to apply for this competitive award. Funding under this mechanism may be awarded for one or two years, with a maximum of \$25,000 per year (up to a total of \$50,000 for two-year projects).

To learn more about the application process and submission requirements, please visit the [GWSPH Research Funding webpage](#) or contact the research team at GWSPHResearch@gwu.edu.

Release Date: July 24, 2024
Due Date: October 11, 2024

[Read the full announcement](#)

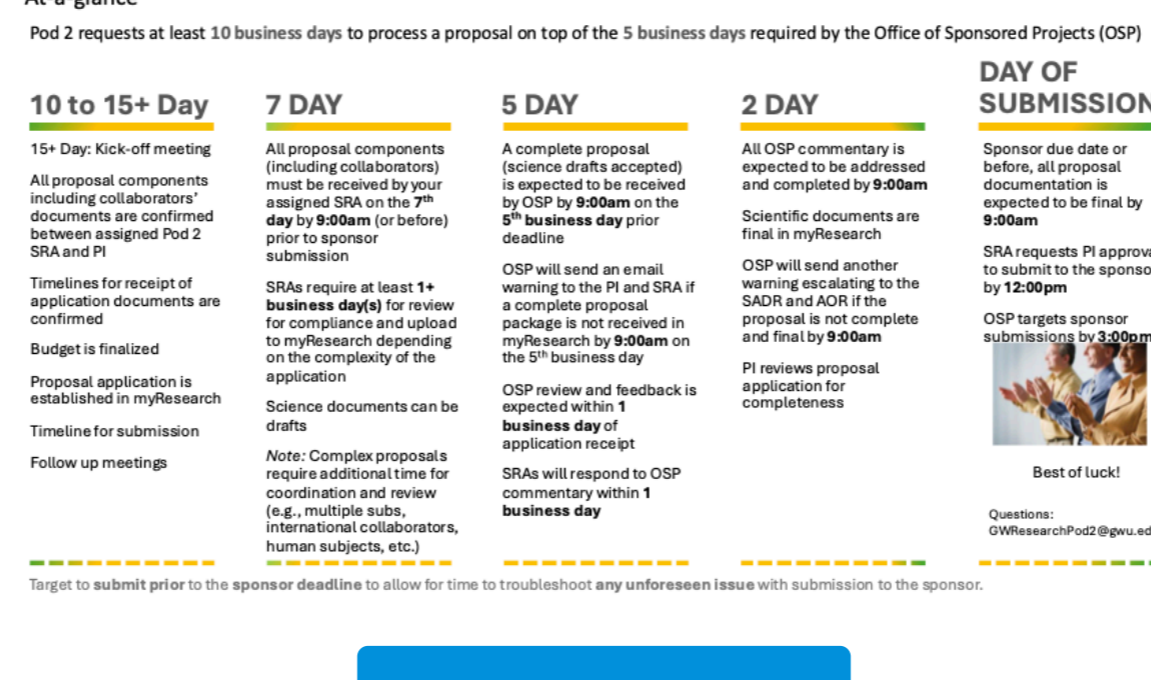
Announcement for GWSPH Principal Investigators

If you are considering or planning to submit a proposal for extramural funding, please inform Pod 2 by completing an [Intent to Submit form](#) as soon as possible. Proposal applications from GWSPH principal investigators to outside funding agencies do require facilitation from Pod 2. A manager from Pod 2 will assign proposal support requests to aid with the application process within 2 business days. The earlier they receive the intent form, the better the quality of service Pod 2 can provide.

Pod 2 requests at least 10 business days to process a proposal on top of the 5 business days required by the Office of Sponsored Projects (OSP).

Questions: gwresearchpod2@gwu.edu

Proposal Routing Demystified



[Intent to Submit Form](#)



Funding Opportunities

DC CFAR: Fall 2024 Traditional Pilot Awards Program

The goal of this program is to provide pilot research funds (up to \$75,000) to early stage and new HIV/AIDS investigators to collect preliminary data that will enable them to then compete successfully for NIH funding in HIV/AIDS as principal investigators. The pre-submission deadline is **September 13, 2024**.

[Learn More](#)

Atlantic Fellows for Equity in Brain Health

Undertake a 12-month, full-time, paid residential fellowship at the Global Brain Health Institute at Trinity College (Dublin, Ireland) or UCSF (San Francisco, CA). The application deadline is **September 20, 2024**.

[Learn More](#)

Pfizer GMGP: Early Diagnosis Improvement of Chlamydia Infections

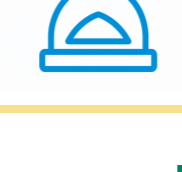
Grants will be offered to support evidence-based programs, with a high reach potential, aiming to improve routine screening practices, appropriate diagnostic methods for chlamydia, use of latest guidelines, and best practices for early diagnosis of chlamydia infections. The letter of intent deadline is **October 7, 2024**.

[Learn More](#)

FDA: Rare Neurodegenerative Disease Grant Program

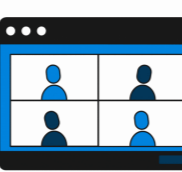
This grant program funds clinical trials of products evaluating the efficacy in support of a new indication or change in labeling to address unmet needs in rare neurodegenerative diseases for children and adults. Application deadline is **October 22, 2024**.

[Learn More](#)



Continuous Deadlines

- [Intramural](#)
 - [Mentor Match Review Awards](#)
 - [Research Enhancement Awards](#)
 - [OVPR Limited Submissions and Intramural Funding Competitions](#)
 - [Extramural](#)
 - [Congressional Directed Medical Research Programs \(CDMRP\)](#)
 - [NIH Supplemental Opportunities](#)
- For further details about funding, please visit the [GWSPH Research Funding Resource Center](#).



Lectures & Events

Diversity Plans for Improving Enrollment of Underrepresented Racial and Ethnic Populations in Clinical Trials

Wednesday, September 18th | 12:00 - 1:00 pm



This webinar delves into the complexities and obstacles associated with recruiting underrepresented racial and ethnic groups for participation in clinical trials. Furthermore, it offers comprehensive strategies and approaches for developing inclusive and effective diversity plans to mitigate these disparities and promote more significant equity in healthcare research. Ensuring equitable access to clinical research is crucial for improving health outcomes for all. This webinar explores the challenges in enrolling underrepresented racial and ethnic populations in clinical trials and offers strategies for developing effective diversity plans to address these disparities.

[Register](#)

Addressing Health-Related Social Needs at Scale in Medicaid: The Past, Present, and Future of North Carolina's Healthy Opportunities Pilots Program

Thursday, August 29th | 12:00 - 1:00 pm

This webinar discusses the Healthy Opportunities Pilots program and the lessons learned from its implementation over the past two years.

[Register](#)

Generative Artificial Intelligence (GenAI) in Public Health Education: Two-Part Workshop Series

Friday, September 6th | 10:30 am - 12:00 pm

The first workshop session will provide GWSPH faculty members with an opportunity to expand their knowledge of readily available GenAI tools.

[Register](#)

Fall 2024 Research Seminar Series: Machine Learning in Environmental Epidemiology

Friday, September 6th | 12:00 - 1:00 pm

Dr. Whanhee Lee and his team will cover machine learning-based air pollution/weather exposure modeling, small area estimation for environmental stressors-health risks, and precision digital health for high-risk populations against extreme weather.

[Register](#)

15th Annual Southby Lecture Featuring Senator Bernie Sanders

Tuesday, September 10th | 10:00 - 11:15 am

Milken Institute School of Public Health Auditorium

The 15th Annual Southby Lecture in Comparative Health Policy will feature U.S. Senator Bernie Sanders, currently serving his third term in the U.S. Senate after winning re-election in 2018.

[Register](#)

Edward N. Brandt, Jr. Memorial Lecture in Women's Health

Wednesday, September 11th | 11:00 am - 12:00 pm

Milken Institute School of Public Health

Dr. Daniel Grossman will deliver the 2024 Brandt Lecture created to honor Dr. Edward N. Brandt, Jr., former Assistant Secretary of Health and Human Services.

[Register](#)



Research Resources

GWSPH Bioethics Interest Group Resource Library

BIG now offers a comprehensive [collection of webinars and discussions](#) to enhance understanding and promote public health ethics. This [digital library](#) features leading experts engaging in profound, thoughtful discourse on the complex ethical considerations that arise in the field of public health.

PCORI: Research Fundamentals

This free [comprehensive training package](#) offers different ways to learn about the health research process and be involved in patient-centered outcomes research.

Global Health Training Centre

The [Global Health Training Centre](#) is a free hub that includes a wealth of research training and professional development materials from across The Global Health Network, collaborating organizations, and institutions and networks.

The Office of Research Excellence (ORE) at The George Washington University's Milken Institute School of Public Health (GWSPH) is a vital support system for our faculty, staff, and students in their research activities. It plays a crucial role in providing guidance for research coordination, compliance, integrity, communication, and services to promote research and discovery, making each member of our community an integral part of our research mission.

Please visit our [website](#) to learn more about how ORE can support you on your research mission. For any questions or additional information, please email GWSPHResearch@gwu.edu.

[Subscribe here for more updates](#)