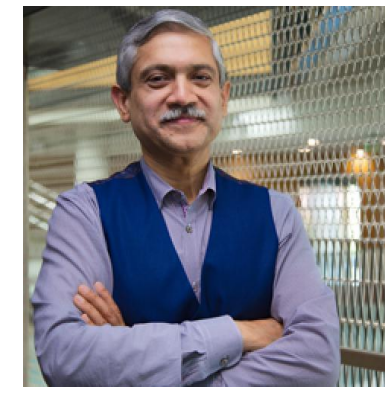


Message from the Senior Associate Dean for Research

Dear Colleagues,

As a school of public health we have had a longstanding and highly productive partnership with our federal government. Now, schools of public health are being called upon to navigate a period of substantial change, and we are reminded that this federal partnership is not to be taken lightly. In just the past weeks, we have seen numerous executive orders, agency directives, and other federal actions that may affect our research mission; the pace and scope of this transition is intense and presents a challenge for our research community, as it does for all of our colleagues in public health and beyond.



We are closely monitoring the evolving federal landscape and collaborating with divisional leaders to assess and prepare for the implications of these changes across the full range of disciplines and programs. We are also hearing from you about your desire to continue the critical work of discovery, your commitment to improving and saving lives, pursuing the next discovery, and advancing opportunity - this is both inspiring and unsurprising and what we at GWSPH do. It will take some time before we know and can provide clear guidance on the extent of the changes before us. Unless you have received specific directions from an agency (and verification of that from us/OVPR), please carry on. For those of you who have received direct federal communications, we will provide guidance and support.

We will continue to do the work that defines us as generators of knowledge and promoters of health of the public - please keep doing your important work - and thank you for the role you play at GWSPH research.

Warm regards,  
AH

Adnan Hyder, MD MPH PhD  
Senior Associate Dean for Research & Innovation  
Professor of Global Health  
Milken Institute School of Public Health



Black History Month: Faculty Highlight



Dr. Donaldson Conserve (MS, PhD) is an Associate Professor in the Department of Prevention and Community Health at the Milken Institute School of Public Health. His research focuses on the implementation and dissemination of evidence-based HIV prevention, care, and treatment interventions for scale-up and population impact. With funding from the National Institutes of Mental Health, Dr. Conserve has led formative research to inform implementation science efforts to promote community-based HIV self-testing distribution in a number of sub-Saharan Africa countries.

He was recently awarded two R01s from the National Institutes of Health to expand his work on HIV self-testing to evaluate a community-based nurse-initiated management of ART (cbNIMART) intervention on linkage to HIV treatment and prevention services following HIV self-testing among men in Tanzania (R01NR021169) and the effect of peer-led promotion of long-acting injectable (LAI) HIV treatment or prevention services on linkage to LAI services among commercial minibus drivers in Nigeria (R01AI186786).

He has also adapted the community-based intervention from Tanzania to conduct formative research developing community-based PrEP delivery for Black adults in Washington, DC. Dr. Conserve is also the Founder and Director of the Black Male Professors and Researchers Collective, which serves as a hub to connect Black male doctoral students, postdoctoral fellows, professors, and researchers. He founded the Collective to minimize the isolation that can result from the Only Black Male phenomenon by: 1) introducing young Black men to the benefits of doctoral education; 2) encouraging them to pursue doctoral studies; and 3) connecting them with experienced Black male scholars, professors, and researchers.



Funding Opportunities

SHARP Training Scholarship Awards

30 summer SHARP trainings will be offered in-person, livestream virtual, or hybrid. Professional development scholarships are available for many SHARP trainings for eligible, early-career candidates - from any domestic or international institution - to cover a portion of the participant registration fees. Application deadline: **March 7, 2025**.

Learn More

Local Data for Equitable Communities Grant Program

This call for proposals (CFP) invites eligible nonprofit organizations in the U.S. to apply for a grant to collect, analyze, and use data to address inequities in the physical, economic, and social conditions of a place. The Robert Wood Johnson Foundation (RWJF) expects to award up to 30 grants of \$50,000 each, with a period of performance of nine months. The Urban Institute, as the national coordinating center for this program, is collaborating with RWJF on program design, grantee support, and communications. Application deadline: **March 18, 2025**.

Learn More

Research Innovation Awards

Proposals must provide evidence explaining the methodological innovation, potential scientific impact, and importance of a public health problem being addressed. For this round, up to two proposals located in (or on) countries in the Latin American and Caribbean region will be reviewed by the Gill-Lebovic Center for co-funding. Application deadline: **March 21, 2025**.

Read More

The Reductarian Fellowship

The Reductarian Fellowship is a unique opportunity for students to begin building the knowledge and skills needed to make a tangible impact on our global food system. Through the program, fellows get: 30+ in-person seminars and workshops, one-on-one mentorship from fellowship staff, introductions to impactful organizations in our network, \$5,750 stipend (contingent upon internship placement at a partner organization). Application deadline: **March 31, 2025**.

Learn More

Bryce Harlow Fellowship Program

The Bryce Harlow Foundation awards fellowships to highly motivated students in pursuit of a career in professional advocacy through government relations and lobbying. Fellowships are awarded to individuals who work full-time and undertake graduate level studies on a part-time basis. Application deadline: **May 4, 2025**.

Learn More



Continuous Deadlines

Intramural

Mentor Match Review Awards

Research Enhancement Awards

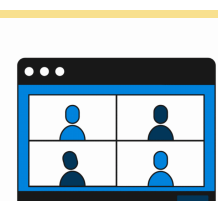
OVPR Limited Submissions and Intramural Funding Competitions

Extramural

NIH Supplemental Opportunities

RWJF: Evidence for Action - Innovative Research to Advance Racial Equity

For further details about funding, please visit the GWSPH Research Funding Resource Center.



Lectures & Events

Development of a Vaccine Against Cholera

Thursday, February 13, 2025 | 4:00 - 5:00 pm

George Washington University, Ross Hall Room 117

Supported by the University Seminar Series Program, please join Dr. Wilbur Chen (Frank M. Calia, MD Endowed Professor at the Center for Vaccine Development and Global Health, University of Maryland School of Medicine) as he presents "Development of a Vaccine Against Cholera."

Register

Research Ethics in Humanitarian and Priority Settings

Wednesday, February 19th | 12:00 - 1:00 pm



Research ethics in humanitarian settings is vital to protect the dignity and rights of vulnerable populations affected by crises. This webinar aims to provide an up-to-date overview of the Research Ethics in Humanitarian and Priority Settings, and the key considerations for public health officials, healthcare providers, and concerned citizens. We invite you to join us as we delve into the latest developments, potential impacts, and the coordinated actions necessary to mitigate this evolving global health crisis.

Register

Navigating Data Sharing: From Administrative Data to Research Data

Thursday, February 20th | 11:00 - 1:00 pm

Join the Data Governance Office and the Office of Research, Compliance and Integrity as we provide an overview of data sharing practices and requirements for using administrative data and research data.

Register

GW Office of Clinical Research Protocol Registration and Results System Information Session

Thursday, February 20th | 2:00 - 3:00 pm

Opportunity for your faculty to join a clinicaltrials.gov training session. Particularly helpful for faculty who are embarking on submitting a ct.gov application.

Register

Truth Be Told: The Art of Storytelling in Health Advocacy Workshop

Monday, February 24th | 11:00 - 1:00 pm

Milken Convening Center

With resources from The Center for Black Health and Equity, this workshop is designed to give interested individuals the tools and ideas they need to be able to speak power to their health experiences and use this power to affect change in their communities and beyond. Participants will learn how to craft their health equity pitch, identify and use varying communication skills, and come away with a 3-minute story that is both personal and effective in advocacy.

RSVP

The Ethics of Artificial Intelligence in Public Health, Law & Society

Tuesday, March 4th, 2025 | 12:00 - 1:00 PM EST

4th Floor Conference Room, GW Milken Institute School of Public Health



Join us for our in-person Bioethics Interest Group Forum Meeting at GWSPH to discuss The Ethics of Artificial Intelligence in Public Health, Law, and society.

The Institute for Trustworthy AI in Law & Society (TRAILS) is the first organization to integrate participation, technology, and governance in designing, developing, and overseeing AI systems. It examines what trust in AI means, develops solutions to enhance trust, and identifies effective policy models. The institute aims to transform AI practices by prioritizing ethics, human rights, and feedback from marginalized communities.

Register



Research Resources

NIH Resources

- Zoom Recording of the NIH Overview from Our Recent Event
- NIH Resources: NIH Grants Process Primer: Application to Award - Part One - Video, Part Two - Video

Office of Sponsored Projects Education & Training Resources

The Office of Sponsored Projects (OSP) provides resources, recordings, forms, and guidebooks on a variety of research-related topics. Find the OSP Resource [here](#).

The Office of Research Excellence (ORE) at The George Washington University's Milken Institute School of Public Health (GWSPH) is a vital support system for our faculty, staff, and students in their research activities. It plays a crucial role in providing guidance for research coordination, compliance, integrity, communication, and services to promote research and discovery, making each member of our community an integral part of our research mission.

Please visit our [website](#) to learn more about how ORE can support you on your research mission. For any questions or additional information, please email [GWSPHResearch@gwu.edu](mailto:GWSPHResearch@gwu.edu).

Subscribe here for more updates