

April 9, 2025

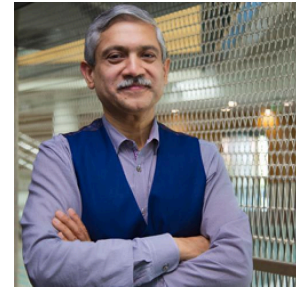
Office of Research Excellence

Message from the Senior Associate Dean for Research

Dear Colleagues,

I hope you have been enjoying the spring weather and cherry blossoms in DC!

I wanted to extend my invitation to you all to participate in and attend our upcoming [2025 GWSPH Research Day Event](#) that will take place next **Wednesday, April 16th**. Come out and show your support for our dedicated students who will be presenting through poster sessions! Top posters in each of 17 [categories](#) are eligible to receive prizes.



Research Day will also feature a showcase of the [GWSPH Research Centers/Institutes](#), providing a great opportunity to engage with faculty and staff from the centers and meet the [Research Support Team](#) managers in person. Don't miss out on this chance to network with other participants, faculty, and staff and build valuable connections that can enhance your academic and professional journey! Join us in celebrating the outstanding research at GWSPH and demonstrating our shared commitment to advancing research and education.

Sincerely,

AH

***Adnan Hyder, MD MPH PhD
Senior Associate Dean for Research & Innovation
Professor of Global Health
Milken Institute School of Public Health***



Research Announcements

Research Day 2025 is next Wednesday!



Join us for the [2025 GWSPH Research Day Event](#) on **Wednesday, April 16th** from 12-4 pm! Don't miss this opportunity to be part of a community committed to advancing research and education!

For more information, visit [GWSPH Research Day 2025](#) or email SPHResearchDay@gwu.edu if you have any questions.

Announcement for GWSPH Principal Investigators

Are you planning on submitting a proposal for funding consideration from an outside sponsor (e.g. NIH, DOD, RWJ, etc.)?

As soon as you identify the funder and funding mechanism, please inform PH&L RST - formerly Pod 2 by completing an **Intent to Submit Form** *as soon as possible*.

A sponsored research administrator (SRA) from PH&L RST - formerly Pod 2 will be assigned and will reach out to you to set up a kickoff meeting to go over logistics, establish timeline deadlines, and gather more information about the proposed project.

PH&L RST requests at least **10 business days** to process a proposal on top of the **5 business days** required by the Office of Sponsored Projects (OSP).

Questions: gwresearchpod2@gwu.edu

[Intent to Submit Form](#)

GWSPH Summer Institute is Back!

SUMMER INSTITUTE

Join our virtual graduate-level courses taught by renowned public health experts. Enhance your skills and advance your career with our flexible program.

JUNE 2ND - 13TH, 2025



Registration is open!

Enroll in the [2025 GWSPH Summer Institute](#), **June 2-13, 2025**

*Taught Online From **Monday through Friday** on **June 2-6** and **June 9-13***

Unleash your potential, network with international professionals, and shape a healthier tomorrow! Learn from leaders at the forefront of public health research and practice who will cover essential public health topics and cutting-edge approaches. Leave empowered to contribute to the local and global health landscape, refine your analytical skills, and broaden your understanding of pressing health challenges.

Taught courses include:

- Responsible Conduct of Research,
- Understanding Commercial Determinants of Health,
- Ethics in Public Health Practice and Policy,
- Global Health And Rule Of Law,
- Reproductive Epidemiology,
- Perinatal Epidemiology,
- Injury And Global Public Health,
- Introduction To Nutrition *In Spanish*
- Digital Methods in Epidemiology

For questions or additional information, email gwsphsummerinstitute@gwu.edu



Research Project Highlight



[Olga Acosta Price, PhD](#) is director of the [Center for Health and Health Care in Schools \(CHHCS\)](#) at the George Washington University Milken Institute School of Public Health and is Associate Professor in the Department of Prevention and Community Health at the University. In her current capacity as director of CHHCS, she advocates for the expansion of school-connected and community-based prevention and intervention approaches across the US, with a focus on strengthening systems to ensure quality education and health equity for vulnerable populations. In her prior role, Dr. Acosta Price became founding director of the School Mental Health Program (SMHP) at the Department of Mental Health in Washington, DC and launched comprehensive school-based mental health programs in more than 30 public charter and DC public schools over six years.

Dr. Acosta Price has dedicated herself to promoting prevention and early intervention programs that address the mental health needs of children and their families, and has developed, implemented, and evaluated programs promoting mental health and resilience conducted in school and community settings. She is currently the Chair of the Board of Directors for the [Coalition of Schools Educating Boys of Color \(COSEBOC\)](#), and a national advisory member for the [Hispanic and Latino Behavioral Health Center of Excellence](#), among other advisory roles. She has written numerous articles and book chapters on children's mental health and school-based services and has presented at national conferences and meetings on children's health.



Funding Opportunities

Climate and Health Research Fellowship

The [Research and Engagement for Action on Climate and Health \(REACH\) Center](#) Climate and Health Research Fellowship is now accepting applications for the 2025 cohort! This paid fellowship is designed to support outstanding graduate students who demonstrate academic excellence, have a strong interest in community-engaged work, and show a deep commitment to advancing health and environmental justice through equitable climate solutions. The cohort of selected students will work collaboratively with a community partner to identify and implement solutions to climate change and health challenges. The fellowship term will run from May 27, 2025 through December 8, 2025. Application deadline: **April 13, 2025**.

[Learn More](#)

Research Innovation Awards: Spring 2025

For this specific round of Innovation Awards, the applications must include consideration or a focus on one or both of the following two themes:

[Subscribe](#) to our email list.

- development of innovative research methods across all public health disciplines which will produce novel advances in science for today's most pressing public health concerns; and/or

- innovative application of existing research methods to new settings, populations, target groups or modalities to help address an important public health issue.

Application deadline: **April 18, 2025.**

[Learn More](#)

Pfizer Global Medical Grants & Partnerships

Pfizer Global Medical Grants & Partnerships have announced a new education RFP (Expanding Access to Maternal Immunization Resources and Point-of-Care Tools). Potential applicants are encouraged to identify and address the educational needs, barriers and gaps for access to maternal immunizations. Application deadline: **May 14, 2025.**

[Learn More](#)

National Science Foundation (NSF): Major Research Instrumentation Program

An MRI proposal may request up to \$1.4 million for acquisition of a multi-user commercially available research/research training instrument and up to \$4 million for development of a research instrument with new capabilities. Internal Competition Application Deadline to the OVPR: **July 29th, 2025.**

[Learn More](#)



Continuous Deadlines

Intramural

[**Mentor Match Review Awards**](#)

[**Research Enhancement Awards**](#)

[**OVPR Limited Submissions and Intramural Funding Competitions**](#)

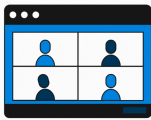
Extramural

[**NIH Supplemental Opportunities**](#)

[**RWJF: Evidence for Action - Innovative Research to Advance Racial Equity**](#)

For further details about funding, please visit the [GWSPH Research Funding Resource Center](#).

[Subscribe](#) to our email list.



Lectures & Events

ELSI Friday Forum | Biogenome Science at an International Scale: Navigating ELSI Challenges

Friday, April 11th, 2025 | 12:00 - 1:00 pm

This session considers how the benefits of biodiversity genomics can be realized locally and internationally, with a special focus on the Earth BioGenome Project (EBP) and the African BioGenome Project (ABP).

[Register](#)

Navigating Uncertainty in Higher Ed - Webinar Series

Multiple dates and times

Approaches for Academic Leaders - Tuesday, April 15th, 2:00 pm - 3:00 pm

In this webinar, academic leaders will share practical approaches for supporting faculty, managing institutional challenges, and navigating change with confidence. Register [here!](#)

Reflections and Lessons Learned - Wednesday, April 30th, 2:00 - 3:00 pm

This wrap-up webinar brings everything together, offering actionable insights and next steps to help you move forward with confidence. Don't miss this opportunity to reflect, strategize, and plan for the future. Register [here!](#)

Truth Be Told: The Art of Storytelling in Health Advocacy Workshop

Monday, April 21st, 2025 | 11:30 am - 1:00 pm



Join the Milken Institute School of Public Health's Office of Inclusive Excellence for a virtual webinar where you will learn how to craft your own pitch, identify and use varying communication skills, and come away with a powerful 3-minute story that is both personal and effective in health advocacy.

[Subscribe](#) to our email list.

RSVP

2025 Bioinformatics Symposium

Monday, April 29th, 2025 | 9:00 am - 6:00 pm

The GW Bioinformatics Symposium on April 29, 2025, a full-day event is designed to bring together faculty, staff, and student bioinformatics researchers and also researchers who use bioinformatics in their labs, from across GW to foster networking, collaboration, and knowledge exchange. The symposium will feature talks from GW labs that focus on bioinformatics and related research, poster presentations, roundtable discussions, and sessions on resources, funding and career opportunities in bioinformatics. Registration and abstract submission deadline: **April 12, 2025.**

[Learn More](#)

Student Journal Symposium for Literary and Research Publications

Thursday, May 1st | 12:00 - 5:00 pm - Virtual only

Friday, May 2nd | 9:00 am - 3:30 pm - hybrid, at GW's Foggy Bottom campus (City View Room) and virtually

We will be hearing from 36 undergraduate and graduate student journals from 28 universities in the United States, Canada, and the United Kingdom, with ~65 students, faculty, librarians, administrators, and publishing professionals speaking on topics such as sustainability, the impact of student research, community building, AI, and other topics! Read the [Full Schedule of Panels and Presentations](#).

RSVP



Research Resources

NIH Resources

- [Explore a Typical NIH Funding Opportunity Resource](#)
- [Preparing for 2025 Application and Review Changes- Tips and Resources](#)
- [Updated NIH Research Performance Progress Report \(RPPR\) Instruction Guide \(PDF document\)](#)
- [NIH Submission Checklist FORMS-I](#)

The Office of Research Excellence (ORE) at The George Washington University's Milken Institute School of Public Health (GWSPH) is a vital support system for our faculty, staff, and students in their research activities. It plays a crucial role in providing guidance for research coordination, compliance, integrity, communication, and services to promote

[Subscribe](#) to our email list.

Please visit our [website](#) to learn more about how ORE can support you on your research mission. For any questions or additional information, please email GWSPHResearch@gwu.edu.

Subscribe here for more updates

[Manage](#) your preferences | [Opt Out](#) using TrueRemove™

Got this as a forward? [Sign up](#) to receive our future emails.

View this email [online](#).

950 New Hampshire Ave NW | Washington, DC 20007 US

This email was sent to .

To continue receiving our emails, add us to your address book.