

April 30, 2025

Office of Research Excellence

Message from the Senior Associate Dean for Research

Dear Colleagues,

I would like to express my heartfelt gratitude to everyone who significantly made the [2025 GWSPH Research Day](#) event a resounding success. We are grateful to our poster presenters, who generously shared their research with us, and to the [mentors, judges, collaborators, faculty, and staff](#) whose unwavering support made this event possible and an exceptional experience. Your invaluable contributions have nurtured our vibrant research ecosystem, shaping the future of public health research!

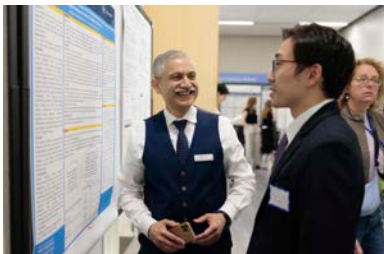
This event was a remarkable display of creativity, sheer dedication, and an unabated passion for advancing public health through cutting-edge research. We take this moment to celebrate the winners from each of the highly coveted categories (below) and all mentors who have selflessly offered guidance along the way.

[Click Here](#) for a list of captivating **Abstract Presentations** from the event.

[Click Here](#) to see the **Prize Winners**

[Click Here](#) to see the **Abstract Booklet** for more information

Thank you once again, and we look forward to welcoming you back in 2026!



Sincerely,
AH

***Adnan Hyder, MD MPH PhD
Senior Associate Dean for Research & Innovation
Professor of Global Health
Milken Institute School of Public Health***



Research Announcements

NIH Reminders

Application Requirements for Projects Involving Activities Outside of the US or Partnerships with International Collaborators

NIH would like to remind the extramural research community about long-standing application requirements for projects involving activities outside of the United States or partnerships with international collaborators. Read more [here](#).

Notice Number: [NOT-OD-25-098](#)

"Foreign Justification" Statement for NIH Applications

Per the SF424 Application Guide, applications submitted by foreign (non-U.S.) institutions or by domestic (U.S.) institutions with a foreign component, as [defined in the NIH Grants Policy Statement](#), must include a "Foreign Justification" statement as part of the application package. This requirement is applicable regardless of eligibility requirements stated in the Notice of Funding Opportunity. **Applications missing the foreign justification attachment are subject to withdrawal prior to review.** More details are available here: [How to Apply—Application Guide \(Grants & Funding\)](#) and [Research Instructions for NIH and Other PHS Agencies](#).

Announcement for GWSPH Principal Investigators

Are you planning on submitting a proposal for funding consideration from an outside sponsor (e.g. NIH, DOD, RWJ, etc.)?

As soon as you identify the funder and funding mechanism, please inform PH&L RST - formerly Pod 2 by completing an **Intent to Submit Form** *as soon as possible*.

A sponsored research administrator (SRA) from PH&L RST - formerly Pod 2 will be assigned and will reach out to you to set up a kickoff meeting to go over logistics, establish timeline deadlines, and gather more information about the proposed project.

PH&L RST requests at least **10 business days** to process a proposal on top of the **5 business days** required by the Office of Sponsored Projects (OSP).

Questions: gwresearchpod2@gwu.edu

[Intent to Submit Form](#)

GWSPH Summer Institute is Back!

SUMMER INSTITUTE

Join our virtual graduate-level courses taught by renowned public health experts. Enhance your skills and advance your career with our flexible program.

JUNE 2ND - 13TH, 2025



Registration is open!

Enroll in the [2025 GWSPH Summer Institute](#), **June 2-13, 2025**

*Taught Online From **Monday through Friday** on **June 2-6** and **June 9-13***

Unleash your potential, network with international professionals, and shape a healthier tomorrow! Learn from leaders at the forefront of public health research and practice who will cover essential public health topics and cutting-edge approaches. Leave empowered to contribute to the local and global health landscape, refine your analytical skills, and broaden your understanding of pressing health challenges.

Taught courses include:

- Responsible Conduct of Research,
- Understanding Commercial Determinants of Health,
- Ethics in Public Health Practice and Policy,
- Global Health And Rule Of Law,
- Reproductive Epidemiology,
- Perinatal Epidemiology,
- Injury And Global Public Health,
- Introduction To Nutrition *In Spanish*
- Digital Methods in Epidemiology

For questions or additional information, email gwsphsummerinstitute@gwu.edu



Funding Opportunities

Pfizer Global Medical Grants & Partnerships

Pfizer Global Medical Grants & Partnerships have announced a new education RFP (Expanding Access to Maternal Immunization Resources and Point-of-Care Tools). Potential applicants are encouraged to identify and address the educational needs, barriers and gaps for access to maternal immunizations. Application deadline: **May 14, 2025.**

[Learn More](#)

RWJF Evidence for Action: Rapid Response Research Awards

Rapid Response Research awards are specifically intended to support early- to mid-career health equity researchers whose racial or Indigenous health equity research was interrupted by federal funding shifts. Project Directors (PD) for this award need not have been the Principal Investigator or PD of the originally funded project. Funds may cover a wide range of costs that were associated with the original research project. Application deadline: **May 28, 2025 at 3pm.**

[Learn More](#)

RWJF Evidence for Action: New Research Support Awards

We will fund research that uplifts the knowledge, expertise, and power of Indigenous Peoples and communities of color to develop or test solutions that advance racial and Indigenous health equity.

We welcome applications from teams that have a deep and demonstrable history with and commitment to racial and/or Indigenous health justice, conduct research in service of and by or in partnership with Indigenous Peoples and/or other historically marginalized communities of color, apply equitable research practices, and ensure findings are actionable in the real world. Lead applicant organizations **MUST BE** community-based organizations with a track record of racial and Indigenous health equity work. Letter of intent deadline: **July 16, 2025 at 3pm.**

[Learn More](#)

National Science Foundation (NSF): Major Research Instrumentation Program

An MRI proposal may request up to \$1.4 million for acquisition of a multi-user commercially available research/research training instrument and up to \$4 million for development of a research instrument with new capabilities. Internal Competition Application Deadline to the OVPR: **July 29th, 2025.**

[Learn More](#)



Continuous Deadlines

Intramural

Mentor Match Review Awards

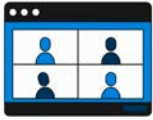
[Subscribe](#) to our email list.

Extramural

[NIH Supplemental Opportunities](#)

[RWJF: Evidence for Action - Innovative Research to Advance Racial Equity](#)

For further details about funding, please visit the [GWSPH Research Funding Resource Center](#).



Lectures & Events

Student Journal Symposium for Literary and Research Publications

Thursday, May 1st | 12:00 - 5:00 pm - Virtual only

Friday, May 2nd | 9:00 am - 3:30 pm - hybrid, at GW's Foggy Bottom campus (City View Room) and virtually

We will be hearing from 36 undergraduate and graduate student journals from 28 universities in the United States, Canada, and the United Kingdom, with ~65 students, faculty, librarians, administrators, and publishing professionals speaking on topics such as sustainability, the impact of student research, community building, AI, and other topics! Read the [Full Schedule of Panels and Presentations](#).

RSVP

Strategies for Successful Interdisciplinary Collaborations

Thursday, May 29th | 12:00 - 1:00 pm

Effective interdisciplinary collaboration is increasingly essential for securing funding for large-scale projects. In this webinar, we will explore the art of working with experts beyond your field — from identifying and reaching out to potential collaborators to navigating each phase of developing a competitive grant proposal.

Register

Save the Date: Community-Based Primary Health Care in Times of Volatility and Change

Saturday, November 1st | 8:00 am - 5:00 pm

Washington, DC

The CBPHC Working Group will host an in-person workshop just ahead of the American Public Health Association (APHA) Annual Meeting (Nov 2–5). This will be a working space—not just a lecture room—for policymakers, practitioners, researchers, and community leaders to share lessons, explore partnerships, and move forward on advancing community-based primary health care, both in the U.S. and around the world.



Research Resources

NIH Resources

- [Explore a Typical NIH Funding Opportunity Resource](#)
- [Preparing for 2025 Application and Review Changes- Tips and Resources](#)
- [Updated NIH Research Performance Progress Report \(RPPR\) Instruction Guide \(PDF document\)](#)
- [NIH Submission Checklist FORMS-I](#)

[Subscribe](#) to our email list.

The Office of Research Excellence (ORE) at The George Washington University's Milken Institute School of Public Health (GWSPH) is a vital support system for our faculty, staff, and students in their research activities. It plays a crucial role in providing guidance for research coordination, compliance, integrity, communication, and services to promote research and discovery, making each member of our community an integral part of our research mission.

Please visit our [website](#) to learn more about how ORE can support you on your research mission. For any questions or additional information, please email GWSPHResearch@gwu.edu.

Subscribe here for more updates

[Manage](#) your preferences | [Opt Out](#) using TrueRemove™
Got this as a forward? [Sign up](#) to receive our future emails.
View this email [online](#).

950 New Hampshire Ave NW | Washington, DC 20007 US

This email was sent to .

To continue receiving our emails, add us to your address book.