

May 28, 2025

Office of Research Excellence

Message from the Senior Associate Dean for Research

Dear All,

After the semester, it is important to take time to rest and recharge. We have worked hard as students, staff and faculty within the research ecosystem, so focusing on our well-being is essential. Prioritize your physical, mental, and emotional health by engaging in activities that bring you joy, whether it is spending time with loved ones, exploring new hobbies, or simply unwinding. This self-care sets a positive example for others, especially since many of us are twelve-month employees.



The climate crisis is becoming increasingly urgent, as evidenced by more frequent and severe heat waves. These extreme weather events threaten our health, particularly for vulnerable populations. As heat waves intensify and urban heat increases due to human activities, it is crucial to take personal safety measures like staying hydrated and limiting outdoor activities during peak heat hours. We must also advocate for societal actions to support environmental protection. By taking action, we can build resilience and protect ourselves from the impacts of a warming world.

Stay cool, hydrated, and well-rested.
AH

Adnan Hyder, MD MPH PhD
Senior Associate Dean for Research & Innovation
Professor of Global Health
Milken Institute School of Public Health



Research Announcements

Exploring the Ethics of Genome Modification and Species Extinction



[Dr. Paul Ndebele](#), Assistant Director of the Office of Research Excellence, co-authored the essay "[Deliberate Extinction by Genome Modification: An Ethical Challenge](#)" published in Science. The essay examines the ethical implications of using genome modification to intentionally eradicate a species. It poses the question of when, if ever, such an extinction is justifiable, considering the importance of biodiversity and conservation. Currently, one species is under consideration for complete eradication, while others face temporary suppression that could lead to total extinction.

Reminders for Researchers

If you are a researcher and receive any communication from the federal government or their representative about your award, promptly forward those messages to the Office of Sponsored Projects at osr@gwu.edu. Investigators should continue to apply for federal funding, adhere to all announced deadlines and utilize GW's federally-negotiated indirect cost rate. In addition, if you receive a questionnaire, survey or request for data from a federal entity, please immediately contact osr@gwu.edu. Many of these surveys ask questions about institution-wide practices and require review and approval from GW's Authorized Organization Representative.

New Customs Clearance Process For Imported Research Specimens

Researchers have recently reported increased challenges when importing research specimens into the U.S., including customs clearance delays and instances of [researchers being detained by customs authorities](#). To avoid issues, researchers are urged to:

- Fully disclose the nature and quantity of these specimens on the appropriate declaration forms
- Prepare for potential delays due to updated clearance requirements.
- Secure a Customs Power of Attorney (CPOA) form, signed by an authorized institutional official, prior to specimen arrival at U.S. Customs

Additionally, researchers should take all necessary precautions to ensure that the quality of their research specimens is maintained, even in the event of delays.

Announcement for GWSPH Principal Investigators

Are you planning on submitting a proposal for funding consideration from an outside sponsor (e.g. NIH, DOD, RWJ, etc.)?

As soon as you identify the funder and funding mechanism, please inform PH&L RST - formerly Pod 2 by completing an **Intent to Submit Form** *as soon as possible*.

A sponsored research administrator (SRA) from PH&L RST - formerly Pod 2 will be assigned and will reach out to you to set up a kickoff meeting to go over logistics, establish timeline deadlines, and gather more information about the proposed project.

PH&L RST requests at least **10 business days** to process a proposal on top of the **5 business days** required by the Office of Sponsored Projects (OSP).

Questions: gwresearchpod2@gwu.edu

Intent to Submit Form

GWSPH Summer Institute is Back!

The banner features a yellow background with a faint world map. At the top left, it reads "The George Washington University Milken Institute School of Public Health". To the right is the GW logo and the text "Public Health". The words "SUMMER INSTITUTE" are prominently displayed in large, bold, blue letters. Below this, a yellow bar contains the text: "Join our virtual graduate-level courses taught by renowned public health experts. Enhance your skills and advance your career with our flexible program." The dates "JUNE 2ND - 13TH, 2025" are shown in bold blue letters. At the bottom, there is a QR code on the left and a silhouette of the Washington, D.C. skyline on the right.

The George Washington University
Milken Institute School of Public Health

SUMMER INSTITUTE

Join our virtual graduate-level courses taught by renowned public health experts. Enhance your skills and advance your career with our flexible program.

JUNE 2ND - 13TH, 2025

QR code linking to the program

GWSPH Summer Institute 2025

Registration is open!

Enroll in the [2025 GWSPH Summer Institute](#), **June 2-13, 2025**

*Taught Online From **Monday through Friday** on **June 2-6** and **June 9-13***

Unleash your potential, network with international professionals, and shape a healthier tomorrow! Learn from leaders at the forefront of public health research and practice who will cover essential public health topics and cutting-edge approaches. Leave empowered to contribute to the local and global health landscape, refine your analytical skills, and broaden your understanding of pressing health challenges.

Taught courses include:

- Responsible Conduct of Research,
- Understanding Commercial Determinants of Health,
- Ethics in Public Health Practice and Policy,
- Global Health And Rule Of Law,
- Reproductive Epidemiology,
- Perinatal Epidemiology,
- Injury And Global Public Health,
- Introduction To Nutrition *In Spanish*
- Digital Methods in Epidemiology

[Subscribe](#) to our email list.



Funding Opportunities

REACH Center Pilot Grant Competition

The REACH Center announces its second annual seed grant competition, offering **\$80,000** total to fund multiple projects at **\$20,000-\$40,000** each. The program supports multidisciplinary teams-including community partners-from GW, Howard, and George Mason universities. The goal: advance health equity and environmental justice while building capacity for future NIH R-level proposals. Read the [full RFP here](#). **LOIs due June 1, 2025.**

William T. Grant Scholars Program

For early career faculty (within seven years of post-doctorate), this program supports researchers focused on youth issues (ages 5-25). The Foundation has shared a webinar replay on crafting a competitive application and how research can influence policy and practice. Application deadline: **July 1, 2025 at 3pm.**

[Learn More](#)

National Science Foundation (NSF): Major Research Instrumentation Program

An MRI proposal may request up to \$1.4 million for acquisition of a multi-user commercially available research/research training instrument and up to \$4 million for development of a research instrument with new capabilities. Internal Competition Application Deadline to the OVPR: **July 29th, 2025.**

[Learn More](#)

William T Grant Foundation- Institutional Challenge Grant

This grant encourages university-based research institutes and centers to partner with public agencies or nonprofits to reduce inequality in youth outcomes. The award will provide \$650,000 over three years **Application opens: May 15, 2025. Deadline: September 15, 2025 at 3pm**

[Learn More](#)



Continuous Deadlines

Intramural

[Research Enhancement Awards](#)

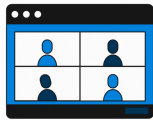
[OVPR Limited Submissions and Intramural Funding Competitions](#)

Extramural

[NIH Supplemental Opportunities](#)

[RWJF: Evidence for Action - Innovative Research to Advance Racial Equity](#)

For further details about funding, please visit the [GWSPH Research Funding Resource Center](#).



Lectures & Events

Developing Vaccines that Induce Broadly Neutralizing Antibodies to Prevent Infection with HIV

Thursday, May 29th | 2:00 - 3:00 pm

This session in the State of the Art Topics in Vaccinology seminar series features Dr. Marina Caskey, a renowned leader in HIV research from The Rockefeller University. She will explore groundbreaking strategies for developing vaccines that induce broadly neutralizing antibodies to prevent HIV infection. This presentation offers a unique opportunity to hear the latest advancements from a key figure in the global effort to combat HIV.

[Register](#)

Strategies for Successful Interdisciplinary Collaborations

Thursday, May 29th | 12:00 - 1:00 pm

Effective interdisciplinary collaboration is increasingly essential for securing funding for large-scale projects. In this webinar, we will explore the art of working with experts beyond your field — from identifying and reaching out to potential collaborators to navigating each phase of developing a competitive grant proposal.

[Register](#)

Grant Proposal Planning and Writing in a Changing Federal Funding Landscape

Wednesday(s) June 4th and June 11th | 11:00 am - 2:00 pm

The Office of the Vice Provost for Research (OVPR) is offering a two-part virtual workshop series titled "Grant Proposal Planning and Writing in a Changing Federal Funding Landscape". The goal of these sessions is to provide participants with the fundamentals and best practices in grant development while offering tips on the grant

[Subscribe](#) to our email list.

Save the Date: Community-Based Primary Health Care in Times of Volatility and Change

Saturday, November 1st | 8:00 am - 5:00 pm

Washington, DC

The CBPHC Working Group will host an in-person workshop just ahead of the American Public Health Association (APHA) Annual Meeting (Nov 2–5). This will be a working space—not just a lecture room—for policymakers, practitioners, researchers, and community leaders to share lessons, explore partnerships, and move forward on advancing community-based primary health care, both in the U.S. and around the world.



Research Resources

GW Launches New Research Impact Web Page

GW has launched a [Research Impact page](#) on its website to showcase federally funded projects that positively impact communities worldwide. The page highlights GW's research efforts in four key areas: advancing life-saving treatments, fueling economic growth, preparing future leaders, and enhancing our understanding of the world.

OSP Federal Research Updates 2025

OSP, in partnership with OVPR and other university personnel, has [created a website page](#) in order to monitor the potential impact of federal actions on our research enterprise. This page is updated frequently as new information is available.

Federal Research Updates 2025

NIH Resources

- [Extramural Nexus Now Hosted on NIH Grants and Funding Website](#)
- [NIH Webpage: Implementation of New Initiatives and Policies](#)
- NIH Grants Process for Beginners [Resources](#)
- [NIH Webpage](#) for Changes Coming to NIH Applications and Peer Review in 2025
- NIH Data Management and Sharing Policy [Website](#)
- [Explore a Typical NIH Funding Opportunity Resource](#)
- [Preparing for 2025 Application and Review Changes- Tips and Resources](#)
- [Updated NIH Research Performance Progress Report \(RPPR\) Instruction Guide \(PDF document\)](#)
- [NIH Submission Checklist FORMS-I](#)

The Office of Research Excellence (ORE) at The George Washington University's Milken Institute School of Public Health (GWSPH) is a vital support system for our faculty, staff, and students in their research activities. It plays a crucial role in providing guidance for research coordination, compliance, integrity, communication, and services to promote research and discovery, making each member of our community an integral part of our research mission.

Please visit our [website](#) to learn more about how ORE can support you on your research mission. For any questions or additional information, please email GWSPHResearch@gwu.edu.

Subscribe here for more updates

[Manage](#) your preferences | [Opt Out](#) using TrueRemove™

Got this as a forward? [Sign up](#) to receive our future emails.

View this email [online](#).

950 New Hampshire Ave NW | Washington, DC 20007 US

This email was sent to .

To continue receiving our emails, add us to your address book.